



## SmartCheck™ DNA Ladders

- |   |  |
|---|--|
| <input type="checkbox"/> <b>PR4005</b><br>50 bp ladder  | <input type="checkbox"/> <b>Sample</b><br>1 x 25 $\mu$ l     |
| <input type="checkbox"/> <b>PR4010</b><br>100 bp ladder | <input type="checkbox"/> <b>100 lanes</b><br>1 x 500 $\mu$ l |
| <input type="checkbox"/> <b>PR4100</b><br>1kb ladder    | <input type="checkbox"/> <b>500 lanes</b><br>5 x 500 $\mu$ l |

Ready-to-use with loading dye added, 0.1mg/ml concentration

Store at -20°C upon receipt.

PH: 908-769-5555 EM: info@accuris-usa.com

## Accuris™ SmartCheck™ DNA Ladders

### Description

Accuris SmartCheck DNA Ladders are produced from proprietary plasmids, digested to completion and purified in a multi-step chromatography process. Ladders are supplied in a ready-to-use format that includes loading buffer and tracking dyes.

- Three sizes: 50bp, 100bp and 1Kb
- Clear, distinct bands
- Reference bands with increased intensity for easy size determination
- Convenient, simply load 5 $\mu$ l per lane

PR4010 / PR4100 ladders are supplied in a buffer consisting of 10mM Tris-HCl (pH 8.0), 5mM EDTA, 12.5% glycerol, 0.008% bromophenol blue, 0.008% xylene cyanol.

PR4005 ladders are supplied in a buffer consisting of 10mM Tris-HCl (pH 8.0), 10mM Na-EDTA, 0.025% Orange G, 10% glycerol.

### Storage

This product is shipped at ambient temperature. Upon receipt, ladders can be stored for up to 24 months at -20°C or at 4°C for up to 3 months.

### Quality Control

The ladders are purified by a multistep chromatography method. Band sharpness is verified by agarose electrophoresis and DNA concentration is verified spectrophotometrically.

### General Guidelines

SmartCheck DNA ladders are supplied ready-to-use. Gently pipette up and down to mix the ladders and add 5 $\mu$ l to the desired well in the gel. If the ladders are frozen, allow time to thaw and mix thoroughly.

The masses of each DNA band per 5 $\mu$ l load are given on the back side of this insert.

### Technical Support

For trouble-shooting and technical support, contact us by phone at 908 769-5555 or email info@accuris-usa.com.

### Limitations of Use

For research purposes only. Not intended for therapeutic or diagnostic use. Accuris is not responsible for consequential or incidental damages, whether direct or indirect, resulting from use of this product.

### Package contents and reordering

See front panel for package contents and reordering information.

See reverse side for images of each ladder with band sizes and masses. Images are cut and placed on lab bench for quick reference.

Accuris offers a full line of PCR enzymes and master mixes. Visit www.accuris-usa.com for details.



## SmartCheck™ DNA Ladders

- |   |  |
|---|--|
| <input type="checkbox"/> <b>PR4005</b><br>50 bp ladder  | <input type="checkbox"/> <b>Sample</b><br>1 x 25 $\mu$ l     |
| <input type="checkbox"/> <b>PR4010</b><br>100 bp ladder | <input type="checkbox"/> <b>100 lanes</b><br>1 x 500 $\mu$ l |
| <input type="checkbox"/> <b>PR4100</b><br>1kb ladder    | <input type="checkbox"/> <b>500 lanes</b><br>5 x 500 $\mu$ l |

Ready-to-use with loading dye added, 0.1mg/ml concentration

Store at -20°C upon receipt.

PH: 908-769-5555 EM: info@accuris-usa.com

## Accuris™ SmartCheck™ DNA Ladders

### Description

Accuris SmartCheck DNA Ladders are produced from proprietary plasmids, digested to completion and purified in a multi-step chromatography process. Ladders are supplied in a ready-to-use format that includes loading buffer and tracking dyes.

- Three sizes: 50bp, 100bp and 1Kb
- Clear, distinct bands
- Reference bands with increased intensity for easy size determination
- Convenient, simply load 5 $\mu$ l per lane

The ladders are supplied at a concentration of 0.1mg/ml, in a buffer consisting of 10mM Tris-HCl (pH 8.0), 5mM EDTA, 12.5% glycerol, 0.008% bromophenol blue, 0.008% xylene cyanol.

PR4005 ladders are supplied in a buffer consisting of 10mM Tris-HCl (pH 8.0), 10mM Na-EDTA, 0.025% Orange G, 10% glycerol.

### Storage

This product is shipped at ambient temperature. Upon receipt, ladders can be stored for up to 24 months at -20°C or at 4°C for up to 3 months.

### Quality Control

The ladders are purified by a multistep chromatography method. Band sharpness is verified by agarose electrophoresis and DNA concentration is verified spectrophotometrically.

### General Guidelines

SmartCheck DNA ladders are supplied ready-to-use. Gently pipette up and down to mix the ladders and add 5 $\mu$ l to the desired well in the gel. If the ladders are frozen, allow time to thaw and mix thoroughly.

The masses of each DNA band per 5 $\mu$ l load are given on the back side of this insert.

### Technical Support

For trouble-shooting and technical support, contact us by phone at 908 769-5555 or email info@accuris-usa.com.

### Limitations of Use

For research purposes only. Not intended for therapeutic or diagnostic use. Accuris is not responsible for consequential or incidental damages, whether direct or indirect, resulting from use of this product.

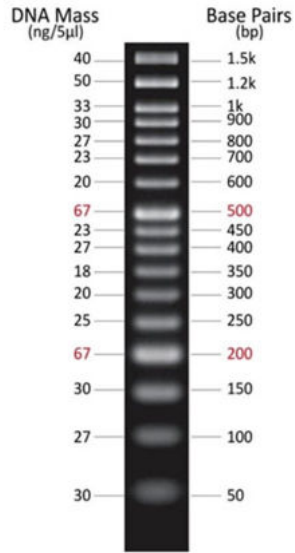
### Package contents and reordering

See front panel for package contents and reordering information.

See reverse side for images of each ladder with band sizes and masses. Images are cut and placed on lab bench for quick reference.

Accuris offers a full line of PCR enzymes and master mixes. Visit www.accuris-usa.com for details.

## 50 bp ladder - PR4005



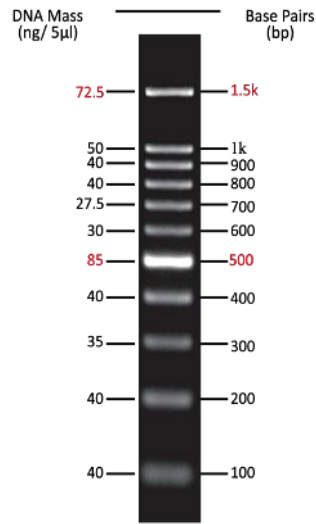
2% Agarose Gel, 0.5x TAE Buffer

Accuris SmartCheck™ DNA Ladders

[www.accuris-usa.com](http://www.accuris-usa.com)



## 100 bp ladder - PR4010



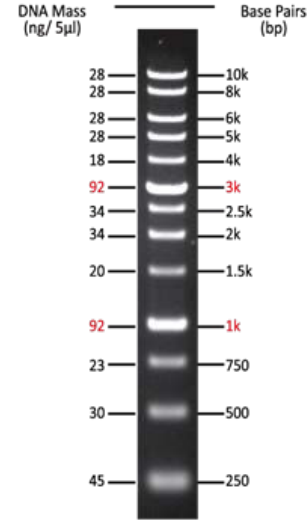
2% Agarose Gel  
0.5x TAE Buffer

Accuris SmartCheck™ DNA Ladders

[www.accuris-usa.com](http://www.accuris-usa.com)



## 1 kb ladder - PR4100



1% Agarose Gel  
0.5x TAE Buffer

Accuris SmartCheck™ DNA Ladders

[www.accuris-usa.com](http://www.accuris-usa.com)



**ACCURIS**  
E3000 UV Transilluminator



302nm UV wave length,  
compact design

**AGAROSE LE**



High quality, enhanced  
resolution agarose

**MYVOLT™ Touch**



300V, dual orientation power  
supply with color touch screen

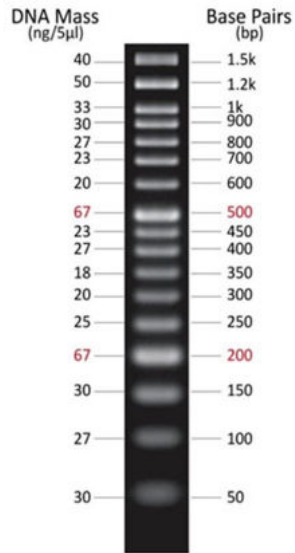
**MYVOLT™ MINI**



Compact and economical  
100/200V output power supply

For additional product details, please visit [www.accuris-usa.com](http://www.accuris-usa.com) or contact your local Benchmark Scientific dealer.

## 50 bp ladder - PR4005



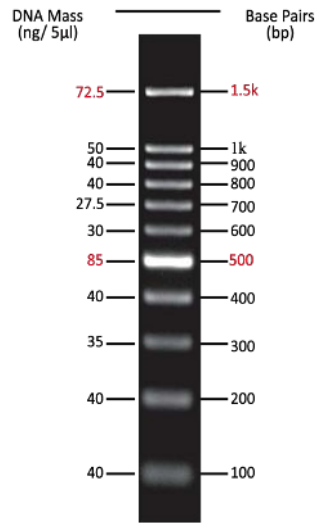
2% Agarose Gel, 0.5x TAE Buffer

Accuris SmartCheck™ DNA Ladders

[www.accuris-usa.com](http://www.accuris-usa.com)



## 100 bp ladder - PR4010



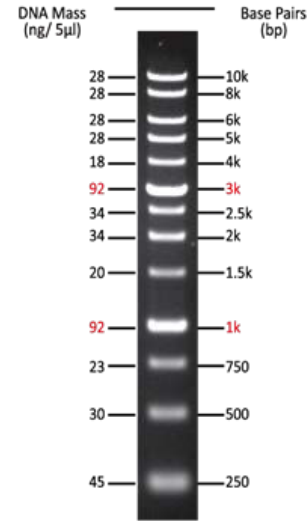
2% Agarose Gel  
0.5x TAE Buffer

Accuris SmartCheck™ DNA Ladders

[www.accuris-usa.com](http://www.accuris-usa.com)



## 1 kb ladder - PR4100



1% Agarose Gel  
0.5x TAE Buffer

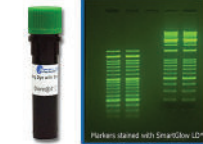
Accuris SmartCheck™ DNA Ladders

[www.accuris-usa.com](http://www.accuris-usa.com)



Benchmark's Accuris Division offers a wide range of products to make electrophoresis easier, safer and smarter. Contact your local distributor for details to place an order.

**SMART**  
SAFE Nucleic Acid Stain  
**GLOW**



Safe Ethidium Bromide alternative,  
fluoresces under UV or blue light

**MY GEL™**  
mini



Complete mini electrophoresis  
system with integral power supply

**SMARTDOC™**



Economical gel viewing and imaging  
with a smart phone or tablet

**SMARTBLUE™**



Blue light transilluminator with  
removable, adjustable filter cover

For additional product details, please visit [www.accuris-usa.com](http://www.accuris-usa.com) or contact your local Benchmark Scientific dealer.